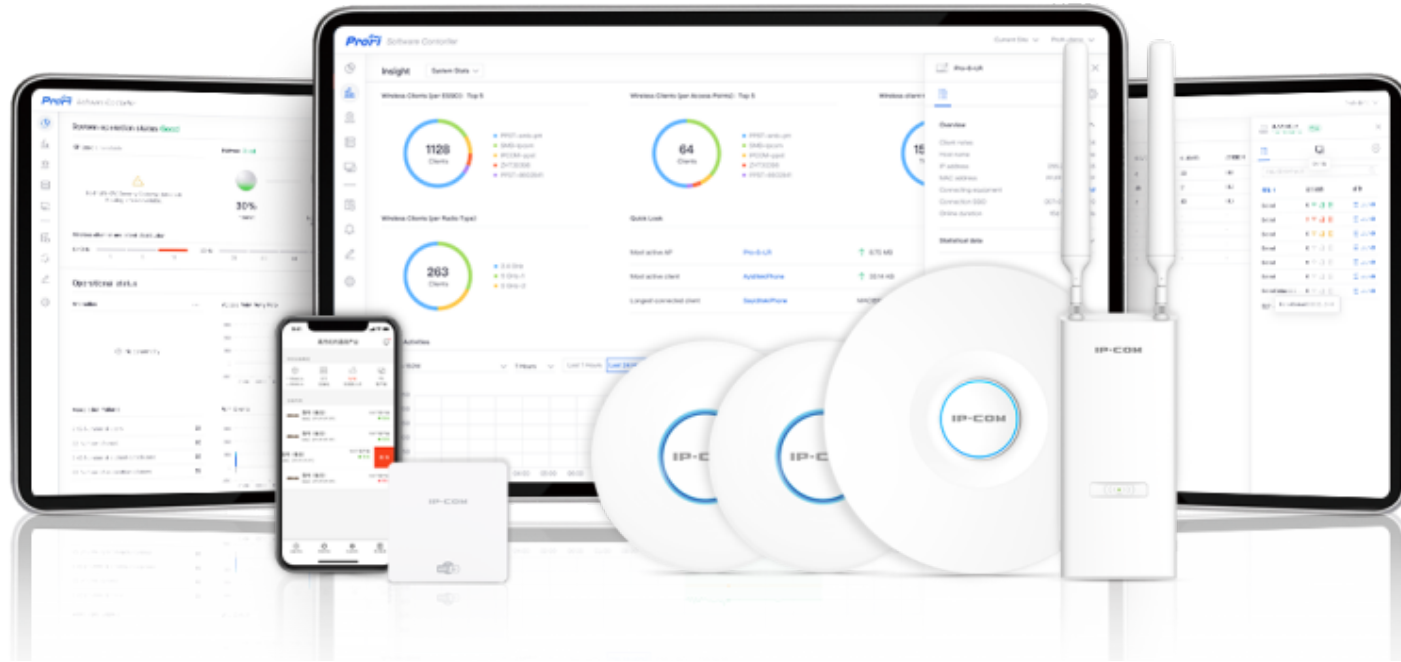


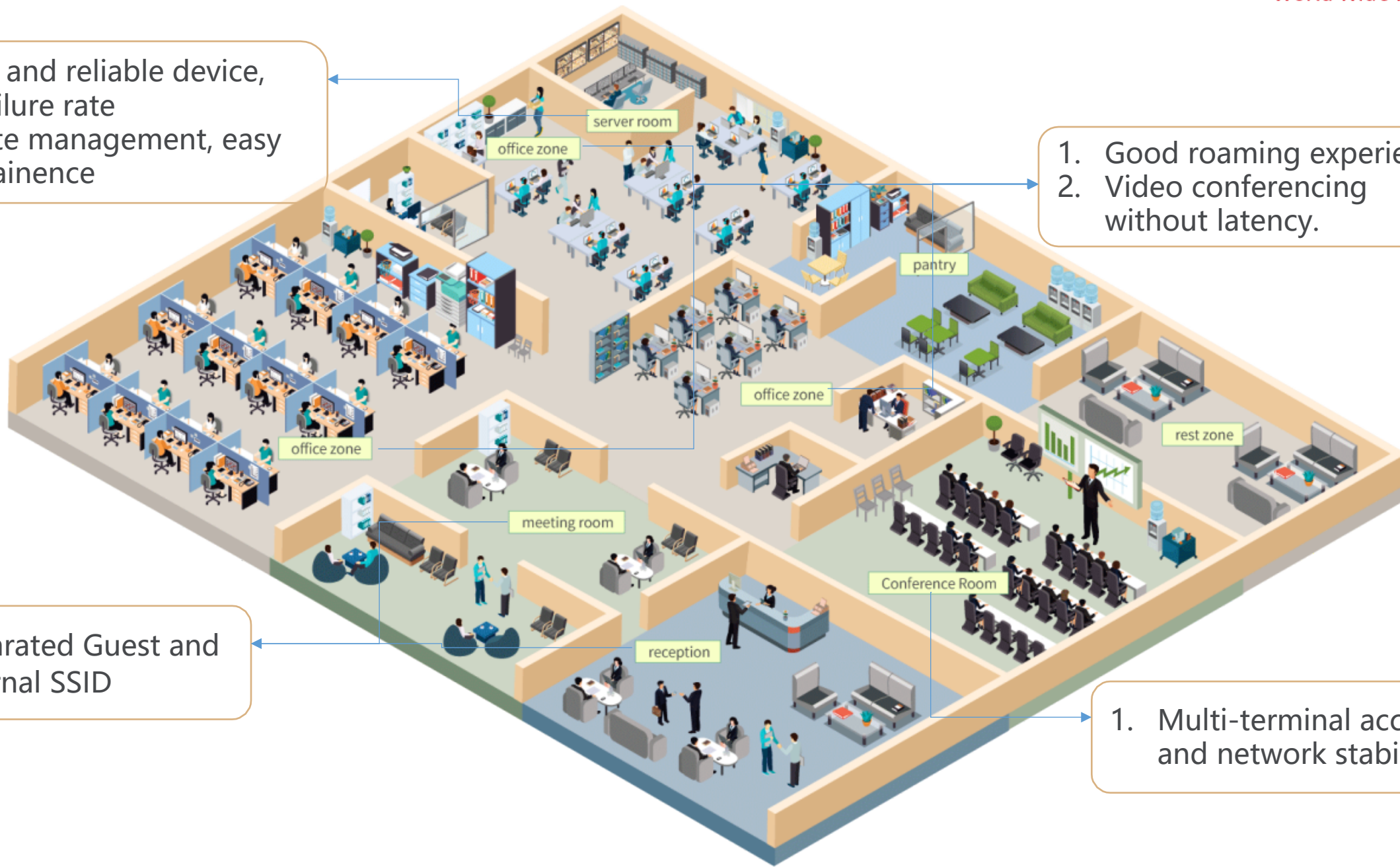
IP-COM WLAN Solution For Enterprises

——Up to 100 people



1. Requirements
2. Solutions
3. Benefits
4. Recommendations

1. Requirements of office scenarios



1. Stable and reliable device, low failure rate
2. Remote management, easy maintenance

1. Good roaming experience
2. Video conferencing without latency.

1. Separated Guest and Internal SSID

1. Multi-terminal access and network stability

1. Requirements Summary

- 1 Separated internal and external networks,
Security and Reliability



- 2 Good Wifi experience



- 3 Safe wireless access



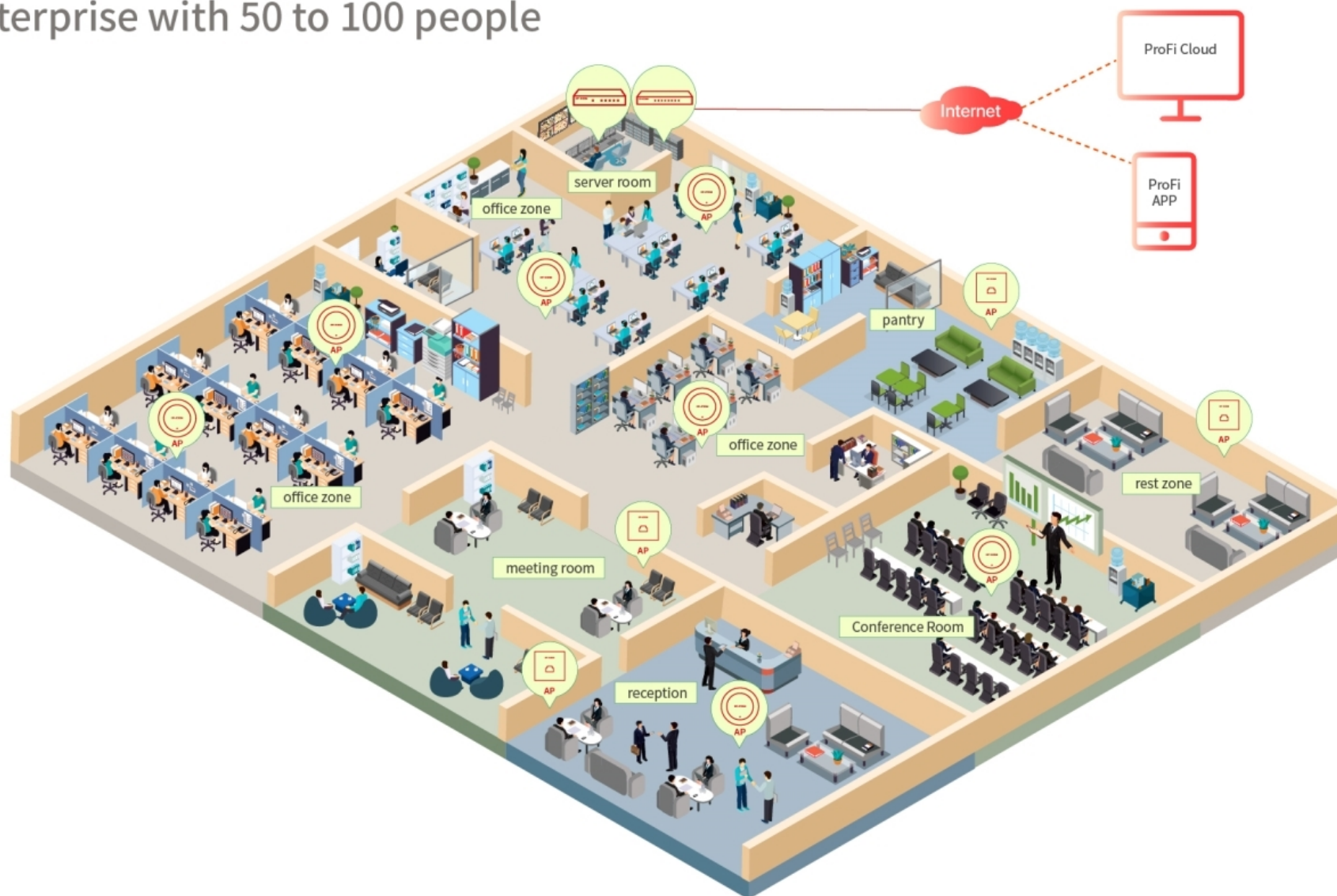
- 4 Easy maintenance



1. Requirements
2. **Solutions**
3. Benefits
4. Recommendations

2. Solutions—General Design

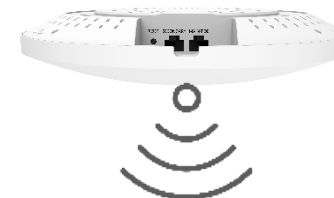
Enterprise with 50 to 100 people



2. Solutions——Key Locations Network Deployment

Reception: Ceiling-mounted AP for coverage of relatively open area

The reception area is relatively open and requires Wi-Fi coverage with smooth roaming without dead zone; working network and guest network need to be set up separately. Ceiling-mounted AP can provide large area coverage and support fast roaming and VLAN mapping



Separated Guest and Staff SSID

Guest

Employee

Different roles

Guest SSID

Staff SSID

Access rights

Only to external
networks. 2Mbps
speed limit

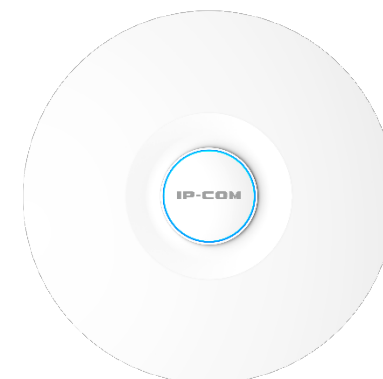
Independent
access for staff.
3Mbps speed limit

Access authentication

2. Solutions——Key Locations Network Deployment

Office zone deployment: Multiple ceiling-mounted APs for coverage of large area

Good Wi-Fi coverage and fast roaming is required for connected devices moving in large office zone; Based on the size of office zone and the number of connected devices, using ceiling APs to ensure high-speed and stable network with good WiFi coverage and smooth roaming.



Ceiling AP

Wide Coverage

Designed with high gain omni-directional antennas , per AP to cover up to 500m².

Smooth roaming

Support 802.11k/v protocol fast roaming, roaming switching time is less than 50ms.

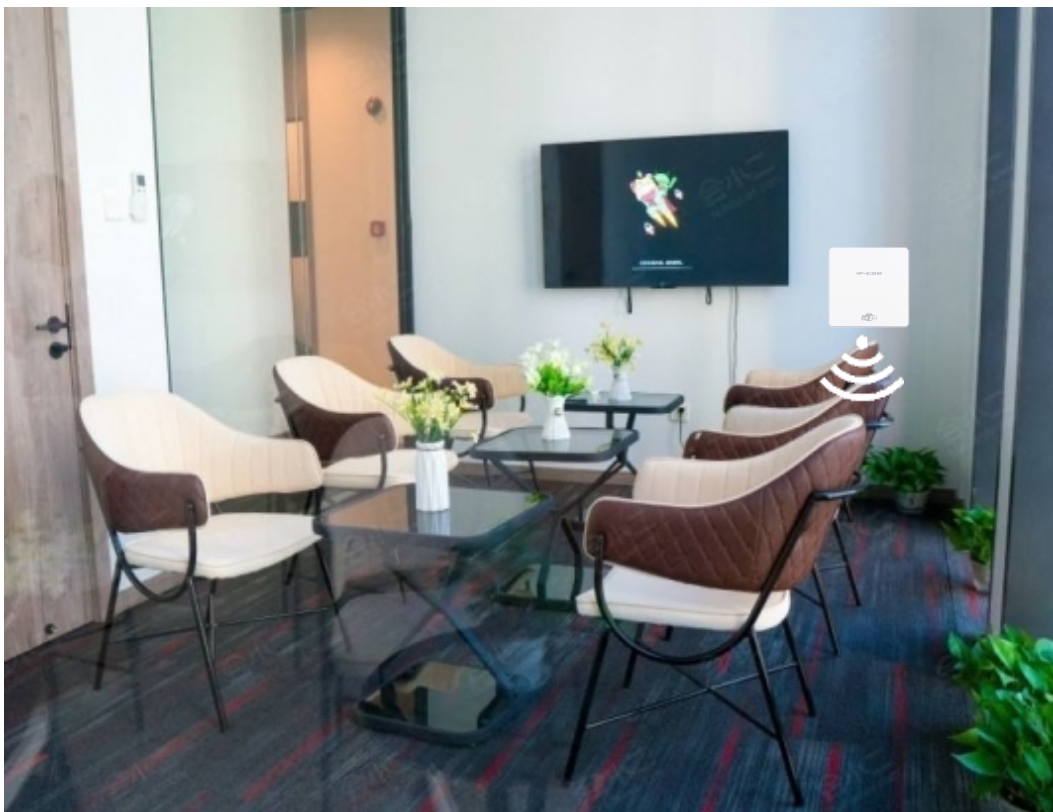
High speed

Wi-Fi 6 standard with maximum rates of up to 3000Mbps per AP.

2. Solutions——Key Locations Network Deployment

Meeting Room: In-wall AP for performance and aesthetics

Meeting rooms are small in size and have a small number of connected devices. Each room is covered by one in-wall AP; It is aesthetically pleasing with high speed and stable wireless access.



In-wall AP

Elegant
appearance

Stylish design with a wide range of colours to suit all decoration styles.

Easy installation

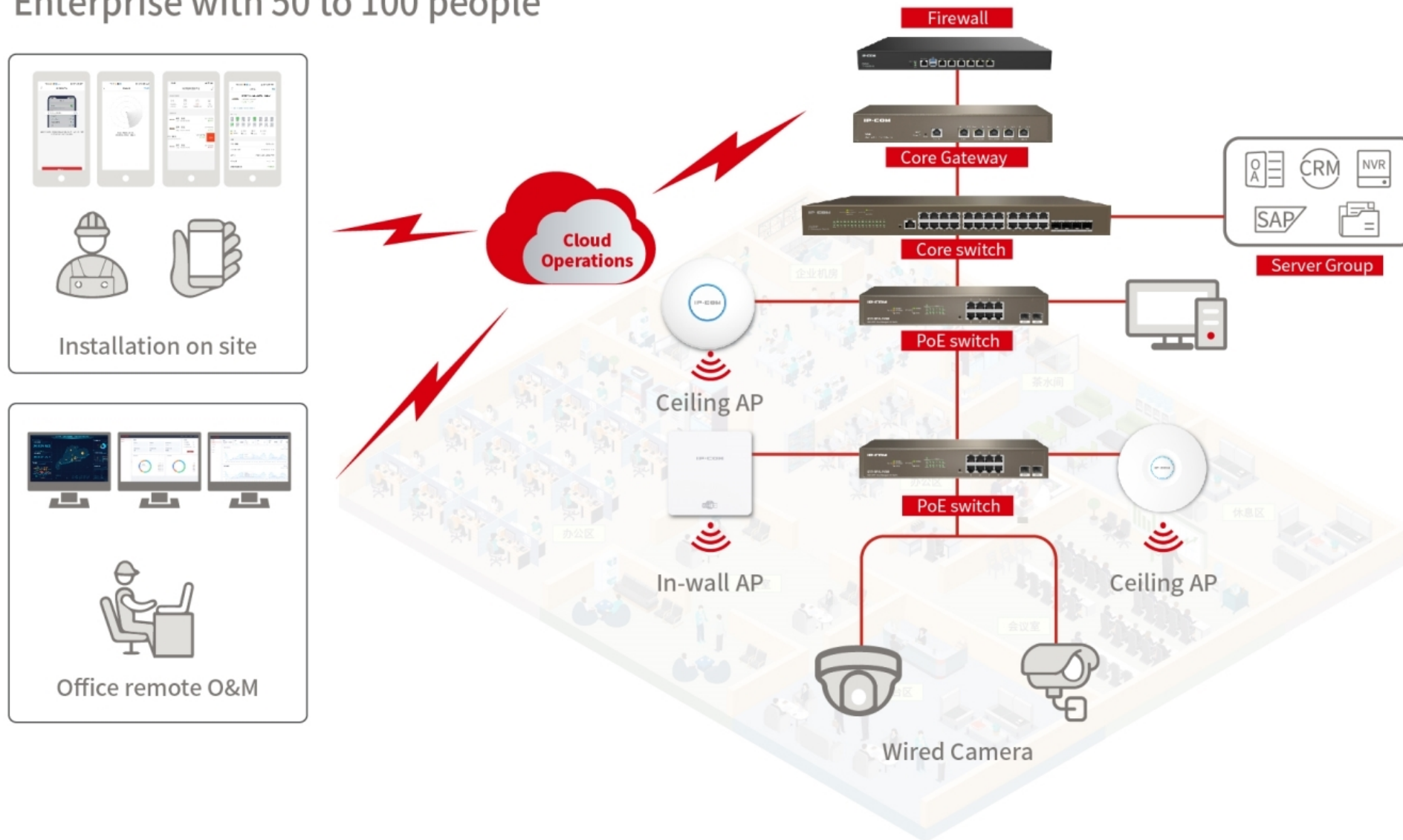
Supports PoE power supply and only requires one Ethernet cable.

High speed

3000Mbps wireless rate

2. Solutions——Network topology

Enterprise with 50 to 100 people

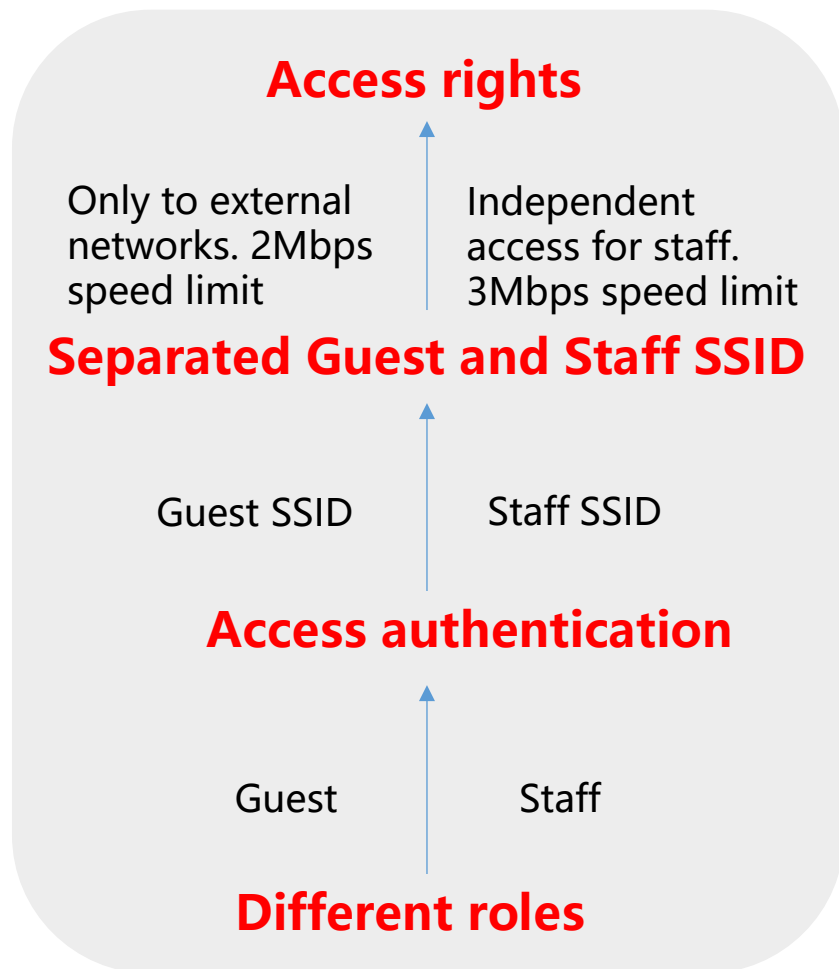


1. Requirements
2. Solutions
3. **Benefits**
4. Recommendations

3. Benefits

Benefit 1: Internal and external network isolation for network security and reliability

Guest Network SSID can easily distinguish accesses for guests and staff; Company staff can connect to office network via a password and guests need to connect to Guest Network SSID



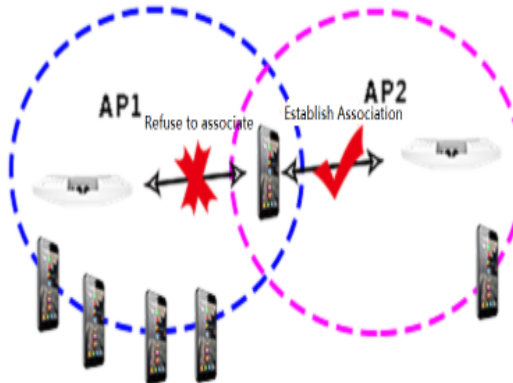
3. Benefits

Benefit 2: High quality wireless network experience

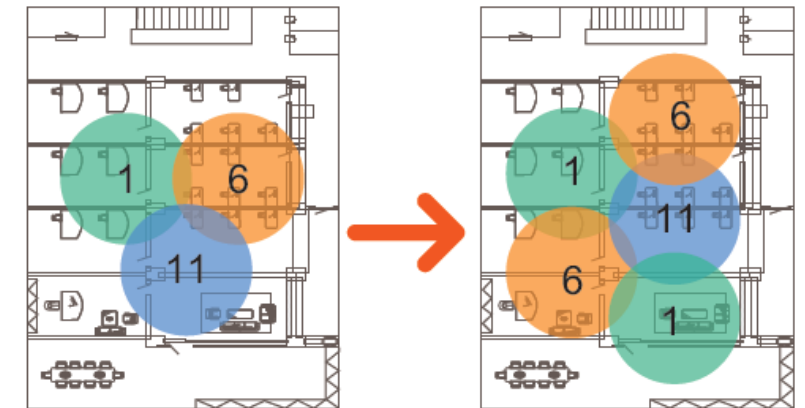
Seamless roaming



Load balancing



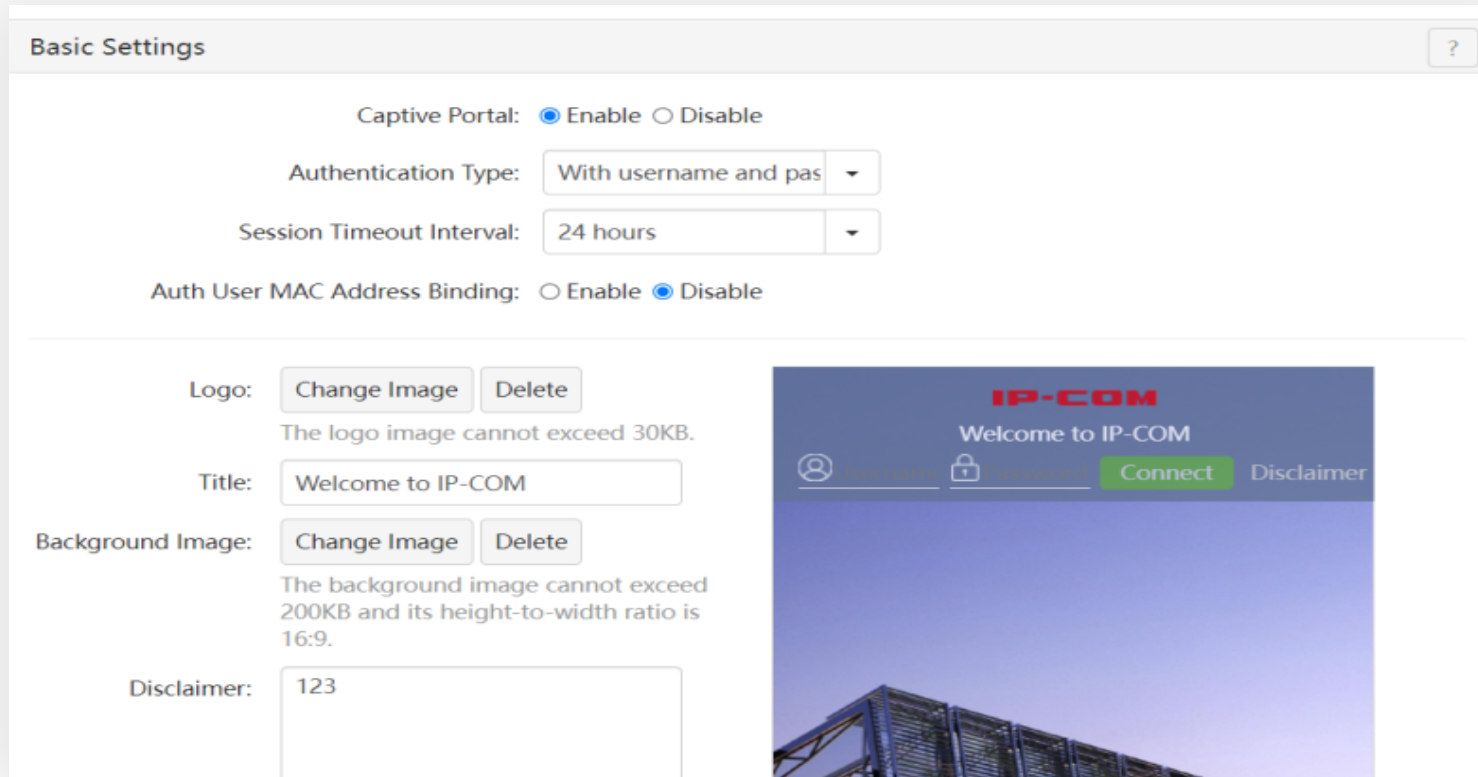
Automatic channel optimisation



- Channel 1
- Channel 6
- Channel 11

3. Benefits

Benefit 3: Multiple authentication ensures the access control for a more secure network



The screenshot shows the 'Basic Settings' window for the Captive Portal. It includes the following configuration options:

- Captive Portal:** ☒ Enable ☐ Disable
- Authentication Type:** With username and pas (dropdown menu)
- Session Timeout Interval:** 24 hours (dropdown menu)
- Auth User MAC Address Binding:** ☐ Enable ☒ Disable
- Logo:** Change Image, Delete (The logo image cannot exceed 30KB.)
- Title:** Welcome to IP-COM
- Background Image:** Change Image, Delete (The background image cannot exceed 200KB and its height-to-width ratio is 16:9.)
- Disclaimer:** 123

On the right side, a preview of the captive portal page is shown. It features the IP-COM logo, the text 'Welcome to IP-COM', and a navigation bar with links for Username, Password, Connect, and Disclaimer. The background of the preview image shows a building structure against a blue sky.

● SMS

● Account Login

● One-click

● PPPoE

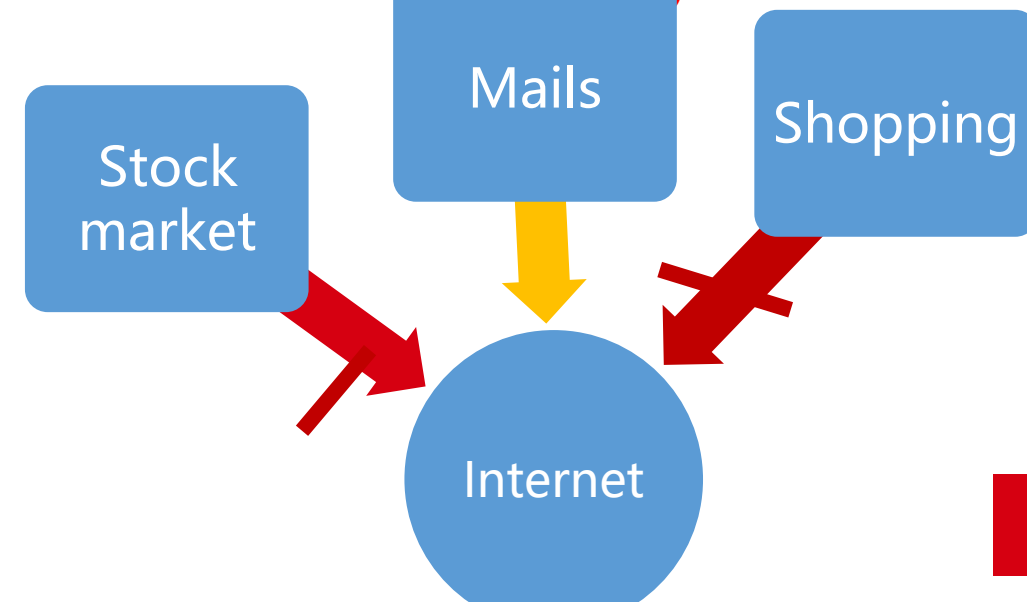
3. Benefits

Benefit 4: A secure, reliable and controlled network

- Anti-virus protection;
- Integrated security technologies against attack;
- Thousands of mainstream applications identified with content control, Significantly improving working efficiency;



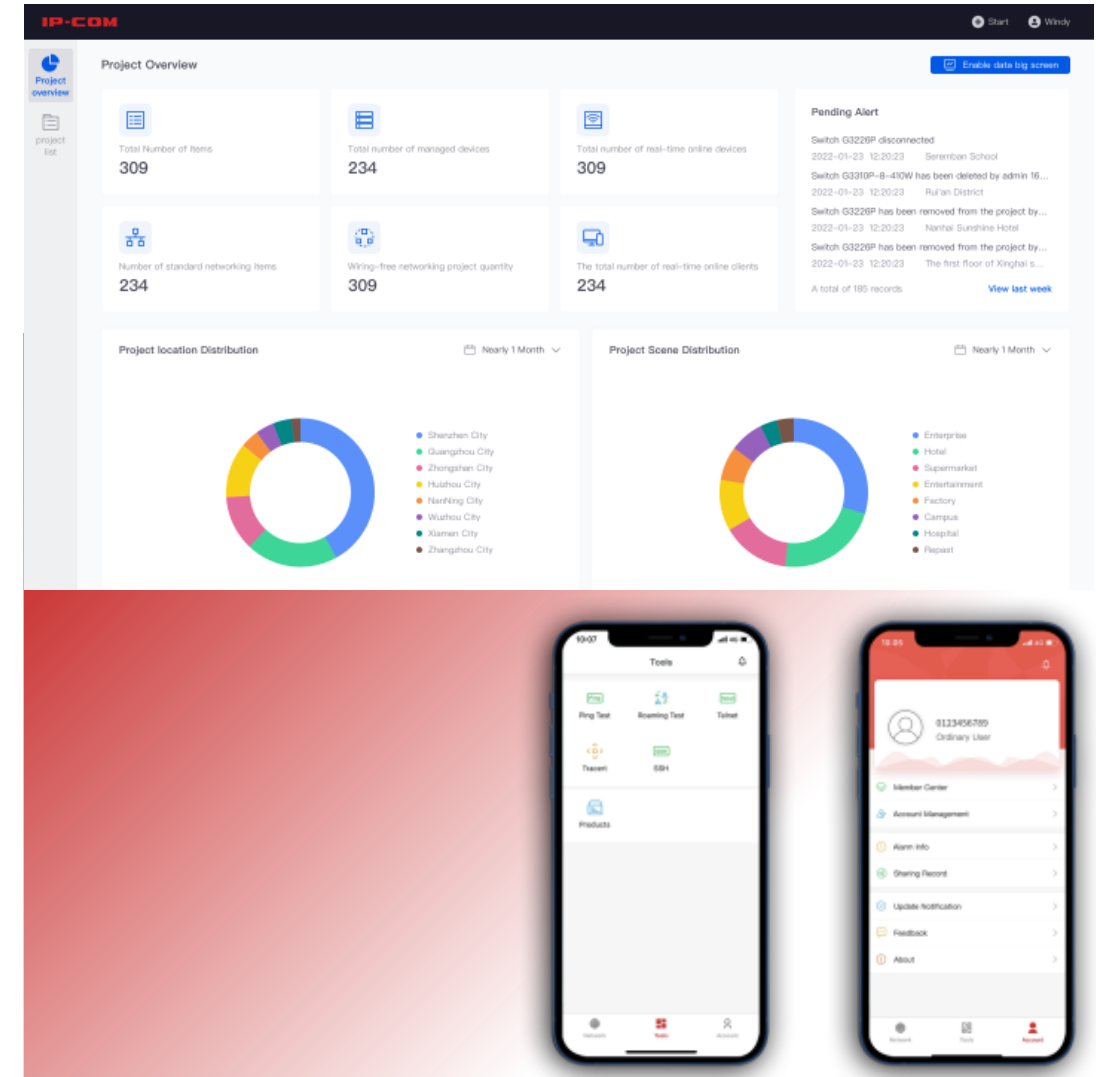
Virus destroyer



3. Benefits






Benefit 5: All devices in the cloud, remote O&M

- Dynamic display of system/device/user status;
- Use APP to manage local devices via cloud relay;
- Wireless interference capability analysis;
- Wireless speed test, PING detection tools;
- Real-time error alerts;









1. Requirements
2. Solutions
3. Benefits
4. Recommendations

4. Recommendations——Cost-effective Wi-Fi5 solution

Scene	Device	Model	Image	Features	Layer
Server room/ Low voltage silo	Gateway	M50		<ul style="list-style-type: none">• 5*Gigabit Ethernet ports, supports 4 broadband accesses• PPPoE,WEB,SMS authentication• Maximum user capacity: 200• Maximum AP Manage Number: 100• Smart Bandwidth Control	Core layer
Server room/ Low voltage silo	Switch	G3328F		<ul style="list-style-type: none">• 24*Gigabit Ethernet ports, 4*Gigabit SFP ports• Switch capacity 336Gbps• MAC address table 16K• Cloud/APP management	Core layer
Office/Low voltage silo	Switch	G2210P-8-102W		<ul style="list-style-type: none">• 9*Gigabit Ethernet ports, 1*Gigabit SFP port• Max PoE Power Supply of whole device: 92W• Cloud/APP management	Access layer
Office/Meeting room	In-wall AP	W36AP		<ul style="list-style-type: none">• 300Mbps+867Mbps• 2*Gigabit Ethernet ports• 18dBm+16dBm	Access layer
Office/Conference room	Ceiling AP	W63AP		<ul style="list-style-type: none">• 300Mbps+867Mbps• 1*Gigabit Ethernet port• 26dBm+26dBm	Access layer

4. Recommendations——High Performance Wi-Fi6 Solution

Scene	Device	Model	Image	Features	Layer
Server room	Gateway	M50		<ul style="list-style-type: none">• 5*Gigabit Ethernet ports, supports 4 broadband accesses• PPPoE,WEB,SMS authentication• Maximum user capacity: 200• Smart Bandwidth Control	Core layer
Server room	Switch	G5328F		<ul style="list-style-type: none">• 24*Gigabit Ethernet ports, 4*Gigabit SFP ports• Switch capacity 336Gbps• MAC address table 16K• DHCP server, Layer 3 static routing, Cloud/APP management	Core layer
Low voltage silo	Switch	G3310P-8-150W		<ul style="list-style-type: none">• 8*Gigabit Ethernet ports, 2*Gigabit SFP ports• Switch capacity 128Gbps• Max PoE Power Supply of whole device: 130W• Cloud/APP management	Access layer
Office/Meeting room	In-wall AP	Pro-6-IW		<ul style="list-style-type: none">• 574Mbps+2402Mbps• 2*Gigabit Ethernet ports• 20dBm+20dBm	Access layer
Conference room	Ceiling AP	Pro-6-LITE		<ul style="list-style-type: none">• 574Mbps+2402Mbps• 1*Gigabit Ethernet ports• 26dBm+26dBm	Access layer
Reception/Office	Ceiling AP	Pro-6-LR		<ul style="list-style-type: none">• 574Mbps+2402Mbps• 2*Gigabit Ethernet ports• 29dBm+29dBm	Access layer

IP-COM / THANKS

WORLD WIDE WIRELESS